



# British Isles – Mouse ID - II

Mark Hows

Cambridgeshire Mammal Group

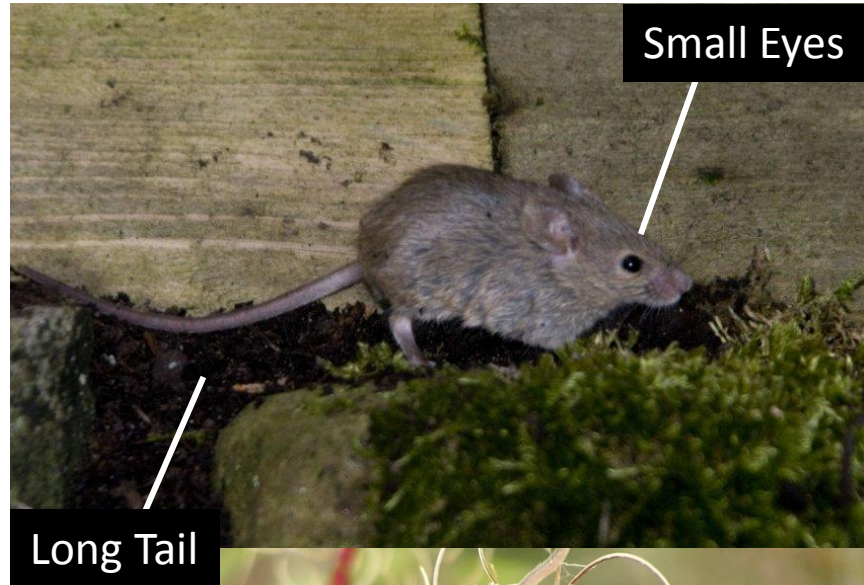
## House Mouse – *Mus domesticus*

**ID Features:-** Grey brown fur which is slightly paler underneath. Smaller eyes than wood mice and large pink ears but smaller than wood mice.

**Size:-** 60-100mm, tail approx. 100% of body length

**Weight:-** 12-22g

**Distribution:-** All of the British Isles.



Small Eyes

Long Tail

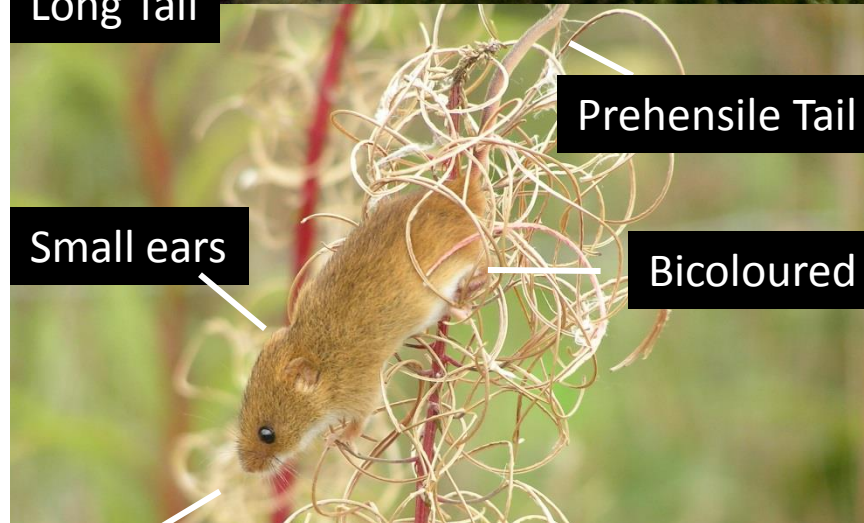
## Harvest Mouse - *Micromys minutus*

**ID Features:-** Bicoloured in appearance ginger on top, white underside. Blunt nose like a vole, small eyes and small furry ears. Furless prehensile tail.

**Size:-** 50-80mm, tail approx. 100% length of body

**Weight:-** 5-11g

**Distribution:-** Most of England, but absent from large parts of the north and Wales.



Prehensile Tail

Small ears

Bicoloured

## Hazel Dormouse - *Muscardinus avellanarius*

**ID Features:-** Bicoloured in appearance ginger on top, grey underside. Blunt nose like a vole, large ears, large eyes and a furry tail.

**Size:-** 60-90mm, tail approx. 100% length of body

**Weight:-** 15-35g

**Distribution:-** Mostly Southern England, Wales but a few populations in Northern England



Blunt nose

Large Ears

Furry Tail

Blunt nose